



GMT MONTHLY MEMBERSHIP PROGRESS REPORT

Results as of: 6/30/2020

Multiple District 3233

LOCATION: INDIA

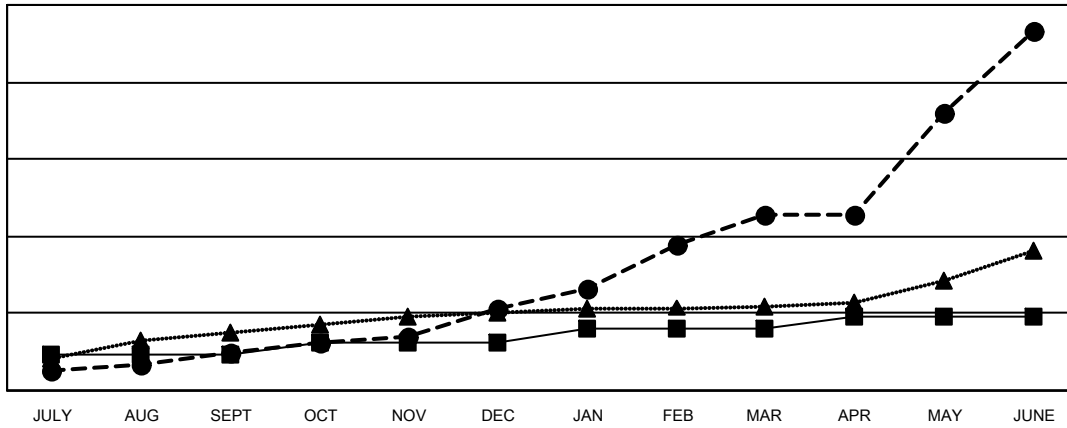
GMT: OPEN

GMT CA 6

Clubs			
RESULTS FOR 2019-2020			
QUARTER	NEW CLUB GOAL	NEW CLUBS	DROPPED CLUBS
JULY/AUG/SEPT	19	20	3
OCT/NOV/DEC	6	22	34
JAN/FEB/MAR	7	49	7
APR/MAY/JUNE	6	96	1

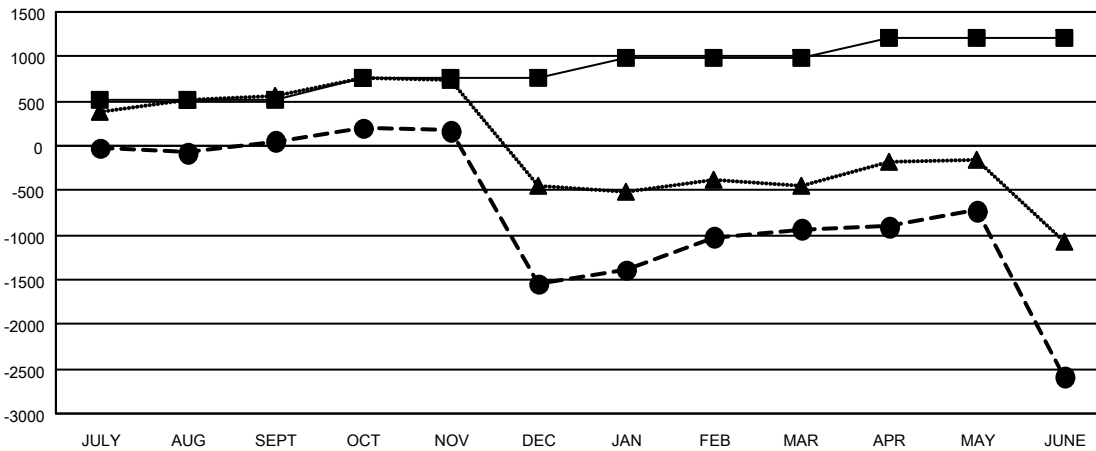
Members			
RESULTS FOR 2019-2020			
QUARTER	MEMBER GROWTH NET GOAL	MEMBER GROWTH ACTUAL	DROPPED MEMBERS ACTUAL (including transfers)
JULY/AUG/SEPT	525	743	636
OCT/NOV/DEC	230	675	2,196
JAN/FEB/MAR	235	1,219	311
APR/MAY/JUNE	210	1,095	2,603

GOALS AND ACTUAL NEW CLUBS CUMULATIVE



- - CURRENT YEAR GOALS FOR NEW CLUBS
- - CURRENT YEAR ACTUAL NEW CLUBS
- ▲ - LAST YEAR ACTUAL NEW CLUBS

GOALS AND ACTUAL MEMBERS CUMULATIVE



- - MEMBER GROWTH NET GOAL
- - MEMBER GROWTH ACTUAL
- ▲ - LAST YEAR MEMBERSHIP ACTUAL

DROPPED CLUBS: 45	516 CLUBS OF 833 ADDED 1 OR MORE NEW MEMBERS	GENDER DISTRIBUTION MALE 13,893 (68.94%) FEMALE 6,259 (31.06%)
DROPPED MEMBERS DECEASED 60 CLUB CANCELLED 1,647 OTHER 4,039 <hr/> TOTAL 5,746	CLICK HERE FOR CUMULATIVE MEMBERSHIP DATA	TOTAL FAMILY UNIT MEMBERS 7,039 FAMILY MEMBERS PAYING HALF DUES 3,893